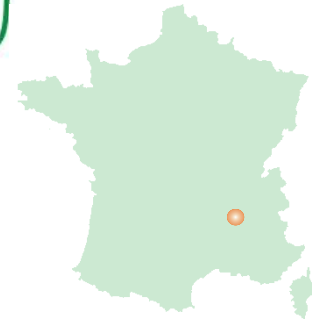




Zoom Projet



Road hierarchy study – Bourg de Péage mixed development zone



This project involved a road hierarchy study at the Bourg de Péage business park. CeRyX Traffic System acted as a subcontractor of Sogreah, the project agent.

PROJECT DETAILS AND BACKGROUND

The Communauté de Communes Canton Bourg de Péage (CCCBP) has completed work on the first phase of the Porte du Vercors business park. There are now plans to build a leisure park in the area.

In light of the forecast increase in the number of vehicles, pedestrians and cyclists within the business parks, a road hierarchy study was commissioned, with the aim of improving traffic conditions for all modes of transport.

ANALYSIS AND METHODOLOGY

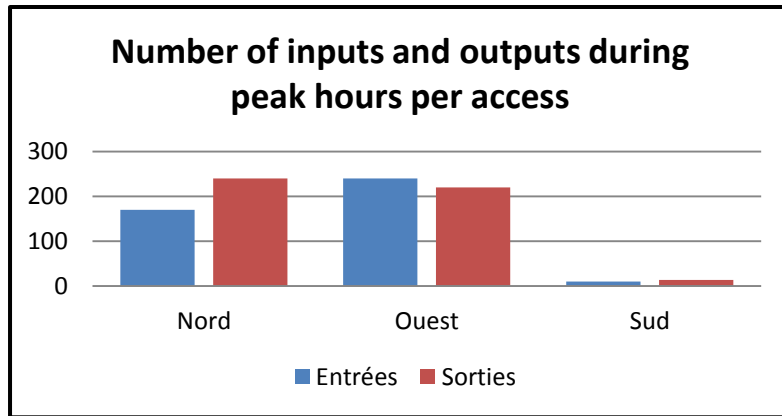
Phase 1: Assessment of the existing situation

Automatic counts were conducted, and the results analysed, to determine current travel conditions within the business park. Related projects were also taken into consideration.

These data were then used to project likely changes in traffic levels, and junction capacities were analysed. These analyses focused in particular on the surrounding roundabouts and potential access points to the forthcoming leisure park.



Diagramme d'écoulement du trafic en HPM



*Statistical analysis of
input / output from the
mixed zone*

Phase 2: Proposed road hierarchy

Road redevelopment recommendations were made, and costings were drawn up for the required road and signage redevelopment work.

SOLUTIONS DELIVERED

This study set out the road redevelopment work needed to prepare for the future construction of a leisure park close to the business park.

The scope of the study was expanded to include connections between the leisure park and the town of Bourg de Péage, as well as connections with other leisure parks. These proposals will mean that heavy goods vehicles and passenger cars will be able to access the leisure park on the same road.



*Hierarchisation de la voirie en fonction
de l'évolution du trafic*